

**California Department of <Xxxxx>
Use Case 8 – System Admin: Manage Reference
Tables
v0.3**

**<Xxxx> Data Center
<YY> Renovation Project
for the Bureau of <zzzzzz> Information and Analysis (<zzzz>)**

**Project Identifier: 000-000
Project Manager: <Aaaa Bbbbb>**

Last Updated: April 5, 2008



Document Revision Record

REVISION RECORD			
DATE	AUTHOR(S)	REVISION	CHANGE REFERENCE
04/05/2008	Bill Blank	0.3	Revisions per email responses as attached
03/11/2008	Bill Blank	0.2	Revisions per meeting
02/21/2008	Bill Blank	0.1	Initial document draft



Table of Contents

1	INTRODUCTION	5
1.1	PURPOSE	5
1.2	STRUCTURE	5
1.3	OVERVIEW	6
1.4	PROCESS MODEL	7
	PROCESS MODEL DESCRIPTION FOR “<YY> USER”	8
	PROCESS MODEL DESCRIPTION FOR “<YY> SYSTEM”	9
1.5	REQUIREMENTS	9
2	ACTORS	11
3	TRIGGER	11
4	PRECONDITIONS	11
5	FLOW OF EVENTS	12
5.1	MAIN EVENT FLOW: MODIFY TABLE	12
5.2	ALTERNATE EVENT FLOWS	13
	MANAGE ADDITIONAL REFERENCE TABLES?	13
	CANCEL MODIFY TABLES	13
	CANCEL TASK	13
5.3	CANCEL/LOG OUT	14
5.4	EXCEPTION EVENT FLOW	14
	EXCEPTION 1: REVISED TABLE, VALIDATION FAILS, FIX	14
6	SCREEN AND MESSAGE DESIGN	15
6.1	SELECT SYSTEM ADMINISTRATION TASK SCREEN	15
6.2	“SELECT FIELD OR REFERENCE TABLE YOU WISH TO MODIFY” SCREEN:	16
6.3	“MODIFY THE ENTRIES IN THE REFERENCE TABLE FOR <NAME OF SELECTED FIELD>” SCREEN:	17
7	POSTCONDITIONS	18
8	BUSINESS RULES	19
8.1	VALIDATIONS	19
8.2	CONSTRAINTS	19
8.3	TRIGGERS	20
9	POSSIBLE FUTURE ENHANCEMENTS	21
10	ISSUES	21
	APPENDIX	22



<YY> Renovation Project – Use Case 8 – System Admin: Manage Reference Tables

CASE/MO TABLES IN CURRENT <YY>	22
OTHERS LOOKUP TABLES FROM CURRENT <YY>	23
OTHER LOOKUP TABLES TO BE IN RENOVATED <YY>	25
REFERENCE TABLES TO BE UPDATABLE IN RENOVATED <YY>	26

1 INTRODUCTION

1.1 PURPOSE

This Use Case provides comprehensive functional requirements for the <YY> Renovation Project. The information contained in this document is the basis for system design and formal testing plans.

1.2 STRUCTURE

This use case has the following sections:

- Introduction – provides a general overview of the use case including process models for the scope of functionality covered.
- Actor(s) – gives a description of the actor involved in the process being described. This can be a person who interacts with the system, another automated system, or the <YY> system itself.
- Trigger – provides a description of the event or reason that would initiate the activity described in this use case.
- Preconditions – lists all conditions that must be true to initiate the functionality depicted by this use case.
- Flow of Events – addresses the series of events that make up the functional activity that defines this use case. This section also includes any alternate or exception flow of events.
- Screen/Message Design – provides either visual representation of relevant end-user screens or detailed specification of messages that will be exchanged among systems.
- Post Conditions – describes how the state of the system has changed after the use case has been completed.
- Business Rules – explicitly describes the business rules that are applied to the activities within the use case.
- Possible Future Enhancements – lists enhancements beyond the scope of this project but may be implemented in future versions.
- Issues – lists outstanding questions and issues to be resolved in order to finalize the specification or the build. This section should be void of content in its final version as all questions should be addressed

1.3 OVERVIEW

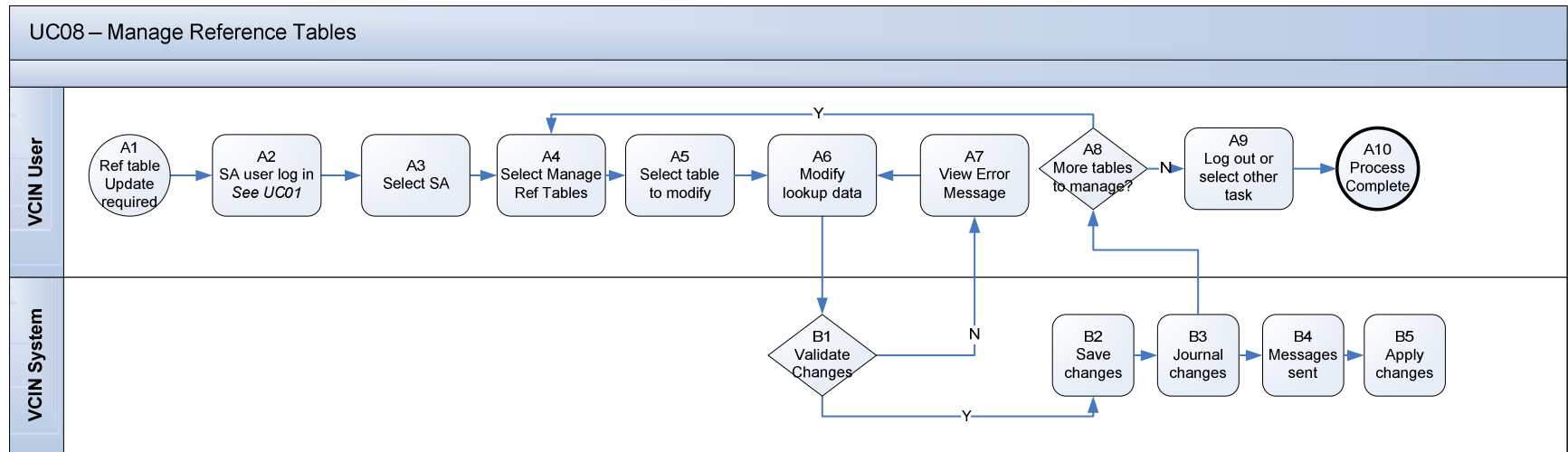
The reference tables in the <YY> database contain lookup data. When a form or a field on a form in the <YY> database contains a dropdown list such that the user must select a value from the list, the choices available in the list are stored in a reference table. The data field points to the reference table containing the choices for that field.

This use case identifies the process for a <YY> user with administrator permissions to add to or deactivate choices in specified reference tables.



<YY> Renovation Project – Use Case 8 – System Admin: Manage Reference Tables

1.4 PROCESS MODEL





<YY> Renovation Project – Use Case 8 – System Admin: Manage Reference Tables

1.4.1 Process Model Description for “<YY> User”

PROCESS STEP	STEP NAME	STEP DESCRIPTION
A1	Ref table update required	<YY> user exists with permission to add, delete, modify selected reference tables; User has been notified that an existing reference table needs modification.
A2	SA user log in	SA user logs in, views System Landing screen.
A3	Select SA	User selects System Administration “Which SA task do you wish to perform?” screen appears
A4	Select Manage Ref Tables	User selects “Manage Reference Tables”. “Select reference table you wish to modify” screen appears, listing all reference tables which user has permission to modify.
A5	Select table to modify	User selects a reference table, clicks Select.
A6	Modify lookup data	List of entries in the selected reference table appears. The list is editable. User modifies the list and clicks Save.
A7	View error message	If the data does not pass all validations, an error message appears, indicating the entry in the list which could not be validated. User clicks OK.
A8	More tables to manage?	When reference table data is saved to the database, a message appears: “Do you wish to modify additional reference tables?”
A9	Log out or select other task	“Select system administration task” screen appears.
A10	Task complete	



1.4.2 Process Model Description for “<YY> System”

PROCESS STEP	STEP NAME	STEP DESCRIPTION
B1	Validate changes	<YY> validates each item in the reference table being edited against any business rules that might apply to the field.
B2	Save changes	If the validation succeeds, changes are saved to the database, but changes in the list of values do not appear to users until effective date reached.
B3	Journal changes	<YY> journals all changes made to the database
B4	Messages sent	<YY> sends notification of impending change to designated user recipients
B5	Apply changes	<YY> activates the changes that were entered after effective date reached.

1.5 REQUIREMENTS

The table below lists the requirements covered by this use case. Requirements are validated and refined throughout the Elaboration phase; the requirements management tool (Compuware Reconcile) is the data of record and supersedes any information presented here.

Req. #	Req. ID	Requirement
	FR115	The system shall request the user to confirm all transactions to save, update, or delete information.



<YY> Renovation Project – Use Case 8 – System Admin: Manage Reference Tables

Req. #	Req. ID	Requirement
	FR 170.	<p>The system shall provide the ability for <XX> staff to add, change, or delete ORIs using the following information, including, but not limited to, the following:</p> <ul style="list-style-type: none"> a. ORI b. Type c. CLETS mnemonic d. City e. User name f. Date g. Time
	FR176	<p>The system shall provide functionality to allow the <XX> staff to manage offense codes (e.g., penal codes), including, but not limited to, the following:</p> <ul style="list-style-type: none"> 1. Add 2. Change 3. Inactivate 4. Delete <p>Requirement Narrative: This requirement is to allow the <XX> staff to manage the offense codes without the assistance of HDC. The specifics on how the maintenance functionality will be handled will be decided during the Design Phase. An important factor to note is that the team shall consider how deletes would be handled (i.e., history records may reference a penal code that is no longer available as it was deleted). The team may choose to only inactivate an offense so it is still available for reporting purposes, etc.</p>
	NF179	<p>The system shall provide the ability to make global changes to contact information.</p> <p>Requirements narrative: if a contact changes assignment or leaves an agency, the agency needs to be able to make a global change from one contact to another for all active registrant records.</p>
	NF27	<p>The system shall provide a list of values (LOV) when a predetermined set of values exists for a field.</p>



2 ACTORS

ACTOR	DESCRIPTION
<YY> User	An individual authorized to provide administrative services to <YY>, including modification of values in designated lookup tables. This individual has a user account assigned an administrative role which is defined with permission necessary to do these services. The individual knows how to perform these services. The individual has a computer connected to the Internet and a browser.
<YY> System	Represents the automated <YY> application.

3 TRIGGER

TRIGGER TITLE	TRIGGER DESCRIPTION
Change request received	SA receives information that a change is necessary in the available options in one or more fields. The need for this change may be the result of legislation, a perceived opportunity to improve data quality or ease of application use.

4 PRECONDITIONS

PRECONDITION TITLE	PRECONDITION DESCRIPTION
Role exists	The system includes user roles that allows the user to manage (modify/add/disable) a defined set of reference tables, provided business rules are not violated.
User exists	A user exists who has been assigned this role



5 FLOW OF EVENTS

5.1 MAIN EVENT FLOW: MODIFY TABLE

STEP	USER ACTION	SYSTEM RESPONSE	PROCESS MODEL REF #
1	Launch <YY> web application.	System displays <YY> system login page.	A1
2	SA user logs in.	System displays System landing screen.	A2
3	User selects System Administration.	System displays “Select System Administration Tasks” screen.	A3
4	User selects Manage Reference Tables.	System displays “Select the reference table you wish to modify” screen, listing all fields with reference tables attached.	A4
5	User selects table to modify.	System displays “Modify the entries in the reference table for <name of reference table>” screen.	A5
6	Modify lookup data. User modifies list and clicks Save.	System validates each changed entry in the revised table against business rules. System saves modified table. System journals changes. System sends notification of impending change to designated user recipients. System will update list of values in table when Change date arrives. System displays, “Do you wish to manage additional reference tables?” message.	A6, B1, A8, B2, B3, B4, B5
7	User clicks No.	System displays “Select Sys Admin Task” screen	A9



<YY> Renovation Project – Use Case 8 – System Admin: Manage Reference Tables

STEP	USER ACTION	SYSTEM RESPONSE	PROCESS MODEL REF #
8	Task complete		A10

5.2 ALTERNATE EVENT FLOWS

5.2.1 Manage additional reference tables?

STEP	USER ACTION	SYSTEM RESPONSE	PROCESS MODEL REF #
6		System displays, “Do you wish to manage additional reference tables?” message.	A8
7	User clicks Yes.	“Select the reference table you wish to modify” screen appears, listing all fields with reference tables attached.	A4

5.2.2 Cancel modify tables

STEP	USER ACTION	SYSTEM RESPONSE	PROCESS MODEL REF #
4		System displays “Select the reference table you wish to modify” screen.	A5
5	User clicks Cancel.	Changes are discarded; “Select System Admin task” screen appears.	A4

5.2.3 Cancel task

STEP	USER ACTION	SYSTEM RESPONSE	PROCESS MODEL REF #
3		System displays “Select Sys Admin Task” screen with options for each SA task and Cancel.	A4
4	User clicks	SA views System Landing screen	A3



<YY> Renovation Project – Use Case 8 – System Admin: Manage Reference Tables

STEP	USER ACTION	SYSTEM RESPONSE	PROCESS MODEL REF #
	Cancel.		

5.3 CANCEL/LOG OUT

STEP	USER ACTION	SYSTEM RESPONSE	PROCESS MODEL REF #
2		System displays “System Landing” screen.	A3
3	User clicks Cancel	User logged out	A2

5.4 EXCEPTION EVENT FLOW

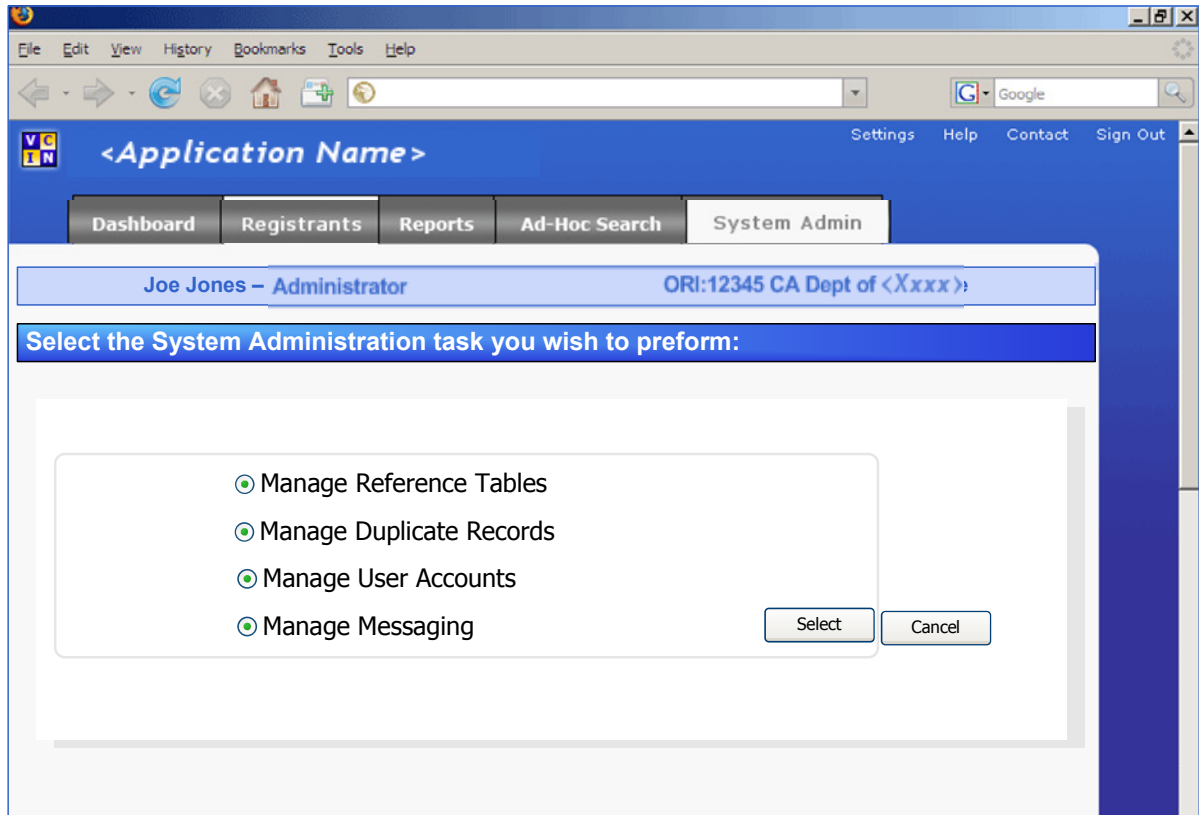
5.4.1 Exception 1: revised table, validation fails, fix

STEP	USER ACTION	SYSTEM RESPONSE	PROCESS MODEL REF #
6	User modifies list of values for reference table and; clicks Save	System validates revised reference table entries against business rules. Validation fails. Error message appears: <input selection> is not a valid entry for <field name>	B1, A7
7	User clicks OK	“Modify the entries in the reference table for <name of reference table>” returns, allowing user to correct the error.	A6



6 SCREEN AND MESSAGE DESIGN

6.1 SELECT SYSTEM ADMINISTRATION TASK SCREEN

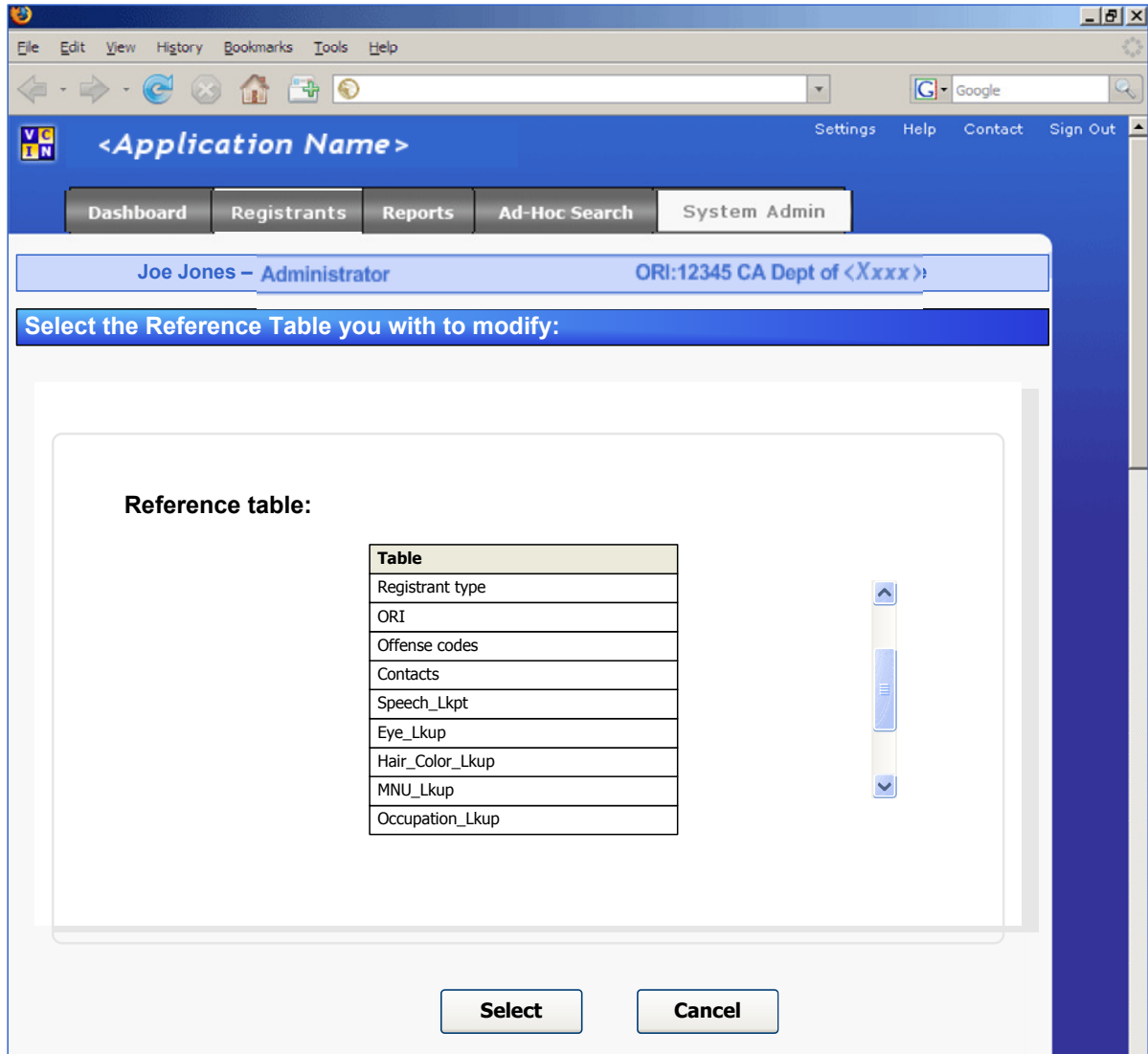


User selects **Manage Reference Tables**. Clicks **Select**. “Select the reference table you wish to modify” screen appears.

User clicks **Cancel**; System Landing screen returns.



6.2 “SELECT FIELD OR REFERENCE TABLE YOU WISH TO MODIFY” SCREEN:



Only tables appear to the user that the user has the permission to modify. Multiple roles exist, allowing different levels of access, including the following paradigms:

- Role 1: HDC only. Can modify NCIC table values; these values should only be modified after determining that changes will not adversely affect <YY> data integrity and <YY>'s interaction with other applications.
- Role 2: HDC only. Can modify <XX> table values; these values should only be modified after determining that changes will not adversely affect <YY> data integrity and <YY>'s interaction with other applications.
- Role 3: <XX>-level administrator; Can modify values in <YY>-only tables
- Role 4: ORI-level administrator; Can modify values for their ORI in the Contacts table.

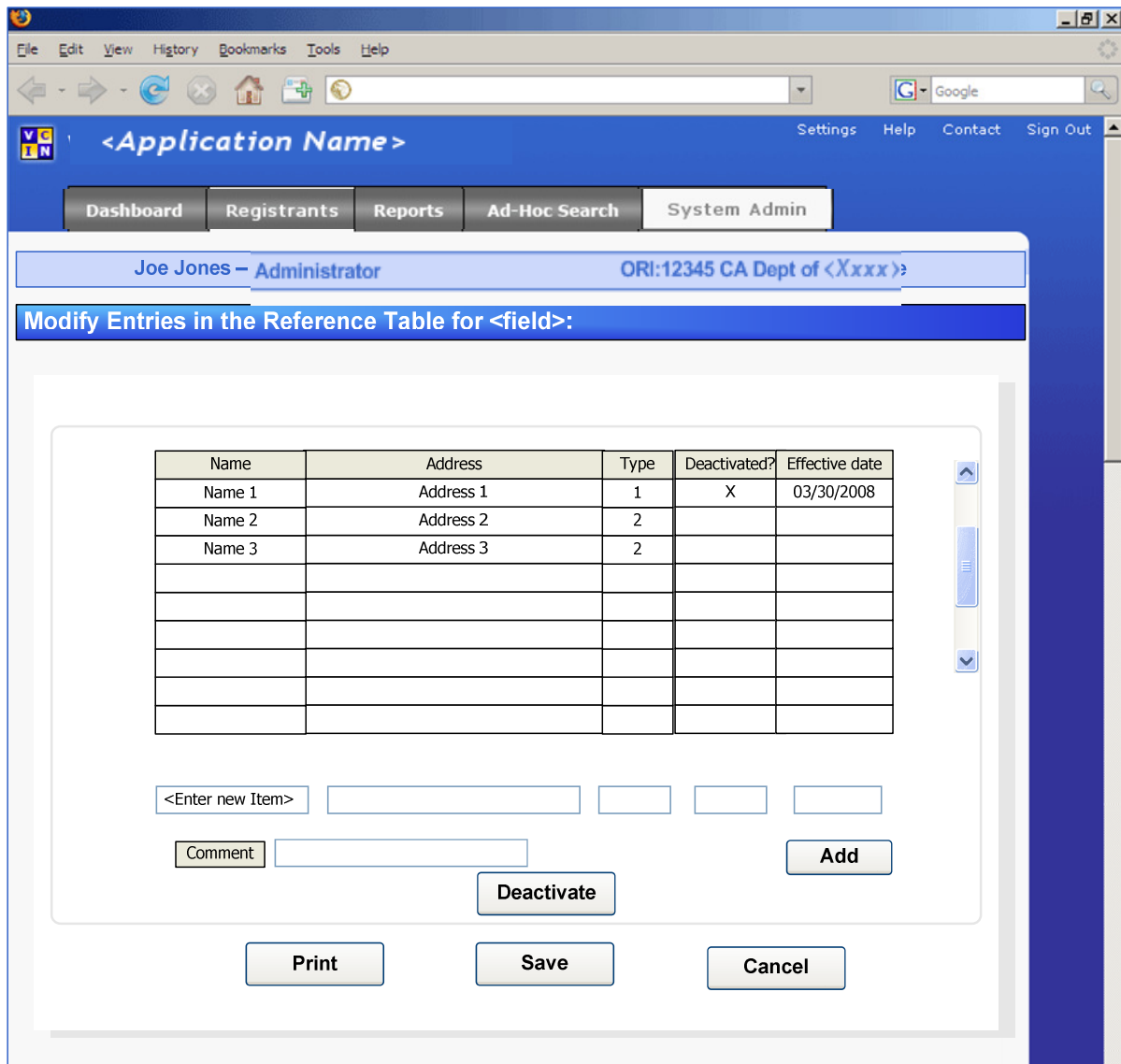


<YY> Renovation Project – Use Case 8 – System Admin: Manage Reference Tables

User selects row in the grid and clicks **Select**; “Modify the entries in the reference table for <name of reference table>” screen appears with all entries in that reference table populating the list.

User clicks **Cancel**, “Select system admin task” screen appears.

6.3 “MODIFY THE ENTRIES IN THE REFERENCE TABLE FOR <NAME OF SELECTED FIELD>” SCREEN:



To add an item to the list, user enters the new value in the <Enter new Item > fields, including a **Comment**, and clicks **Add**. The item appears in the list and a default **Effective date** populates that field. The default date is five business days in the future. Effective date can be postponed but not reduced. User can modify the date and click **Save**.



<YY> Renovation Project – Use Case 8 – System Admin: Manage Reference Tables

Items cannot be deleted from the available values, but they can be deactivated. (See section 10 Issues.) To activate or deactivate an item on this list, the user selects the item. A default date appears (five business days in the future) in the **Effective date** field. User can increase the number of days to the **Effective date**. User can add a comment and clicks **Save**.

If the item the user selects is already deactivated, **Deactivate** changes to **Activate**.

To activate an deactivate item, user selects the item and the default **Effective date** (five business days in the future; date can be increased) appears.

After user modifies the items in the list and adds a comment, user clicks **Save**. System validates changes; if the validation is not successful, an error message appears. User clicks **OK** on the error message and is returned to this screen to modify entries; user clicks **Save** once again.

If the user is an LEA administrator and the user has selected the Contacts table to modify, only those contacts assigned to sex registrants in the user’s ORI appear. If the user proceeds to deactivate a contact and if that contact has been assigned to sex registrants, then a message appears giving the user the option to select another active contact in that ORI with whom to replace the deactivated contact.

When an item is added, activated or deactivated, <YY> sends a message notifying all personnel listed on a message instruction, as described in 16-011 System Admin: Managing Notifications. This message instruction is configured and maintained by <XX>. It specifies the changes to the reference table that will become implemented on the **Effective date**. The message instruction specifies the list of recipients to be contacted (by log in message, email or mnemonic printer number) informing them of the pending change and contact information in the event they have questions.

User clicks **Cancel**; nothing is saved and “Select reference table you wish to modify” screen appears.

User clicks **Print** to open the standard Windows Print dialog, from which a list of the updated list of values can be printed.

7 POSTCONDITIONS

POSTCONDITION TITLE	POSTCONDITION DESCRIPTION
Reference table data updated	The modifications to the available choices for the fields or form associated with the modified reference table appear in the application
Reference table data updated	Journal entries for modifications made have been created



<YY> Renovation Project – Use Case 8 – System Admin: Manage Reference Tables

POSTCONDITION TITLE	POSTCONDITION DESCRIPTION
Reference table data updated	User is logged out or views System Landing page
Users receive message	Designated users receive a message indicating the change that will appear in the respective table's reference data and the date the change becomes activated
Change effected	Unless subsequently cancelled, pending item will take effect on the change date. The update will be made at a time when users won't be impacted.

8 BUSINESS RULES

8.1 VALIDATIONS

A validation is performed on any change to the database a user submits through a web page. If any validations fail, the form is not submitted. For each failed validation, a message appears to the user.

Every change in reference data for a field must be validated against the business rules for that field. For example, if the field requires a numeric value, an entry including letters would fail validation. The business rules for data fields in reference tables can be found in the Global Data Elements Worksheets (works-in-progress).

8.2 CONSTRAINTS

CONSTRAINT NAME	CONSTRAINT DESCRIPTION	MESSAGE TO USER
Viewable reference tables limited by permissions.	<p>Logged in user views and modifies only reference table for which he/she has been granted permission to edit. The following levels of permission have been identified:</p> <ul style="list-style-type: none"> Level 1 permission allows user to modify NCIC tables; this level would only be given to selected 	



<YY> Renovation Project – Use Case 8 – System Admin: Manage Reference Tables

CONSTRAINT NAME	CONSTRAINT DESCRIPTION	MESSAGE TO USER
	<p>HDC personnel.</p> <ul style="list-style-type: none"> ▪ Level 2 permission allows user to modify <XX> tables; this level would only be given to selected HDC personnel. ▪ Level 3 permission allows user to modify tables specific to <YY>; <XX> admin level user. ▪ Level 4 permission allows user to modify ORI-specific tables; ORI admin level user. <p>These levels do not subsume one another; individual users can be assigned multiple levels.</p> <p>Tables are assigned to one or more respective groups during Design Phase.</p>	
<p>Changes to reference tables do not go into effect until Effective date</p>	<p>A change date is assigned to each item that is added or modified in a list of values. The change does not go into effect until the effective date. The default is 5 business days.</p>	
<p>Field level business rules</p>	<p>Business rules determine valid entries for fields which can be entered in the reference table for that field</p>	<p><Item x> is not a valid entry for <reference table></p>

8.3 TRIGGERS

None

9 POSSIBLE FUTURE ENHANCEMENTS

TBD

10 ISSUES

The following are outstanding questions and issues that must to be resolved in order to finalize the specification or the build of this use case.

- FR176 mandates a delete function. <XX> personnel have indicated they do not want a delete function for reference table values due to concerns about referential integrity. Deactivate function is already part of this requirement so use Deactivate instead of Delete. This modification may require a change request.
- A suggestion has been made that we rethink whether we really need three levels of administrative permission roles. Might one role handle all three HDC and <XX> admin roles by specifying procedures to be followed by both HDC and Program. We might need a LEA level administrator, but one <XX> level might handle everything else.
- A suggestion has been made that we rethink whether we really need the five day interval between entering a change in reference data and its taking effect and the accompanying messaging.
- There **may** be an effort underway at <XX> for an Enterprise validation table solution; check with Marc St. Pierre?



APPENDIX

The details and procedures to ensure that changes to reference tables do not break <YY> will be determined during the Design Phase. The information in this Appendix provides an overview of the information developers will need to get it right.

The information in this Appendix is based upon the data analysis of current <YY> by Paul Morris and comments by Andy Archer. This listing is based upon the <YY> Global Data Element Worksheets as of March 26, 2008. Subsequent evolution of those worksheets may modify some of the information here. This document will be updated as further information becomes available.

Analysis of current <YY> has identified 76 lookup/reference tables in current production <YY> that will be converted to the new <YY>. This includes 37 Case/MO tables and 39 others.

CASE/MO TABLES IN CURRENT <YY>

The following is a list of Case/MO tables included in current <YY>. Their existing LOV will not be carried over into <YY> Renovation. Rules regarding modifications to their lookup values will be determined during the Design Phase:

Table name
ALTERATIONS_LKUP
APPROACH_TYPE_LKUP
BINDING_USED_LKUP
BODY_PARTS_BOUND_LKUP
CLOTHING_CONDITION_LKUP
CLOTHING_REMOVED_LKUP
CLOTHING_TYPE_LKUP
CRIME_SCENE_SIGNS_LKUP
DISGUISE_DESCRIPTION_LKUP
DISTANCE_VICTIM_TRANS_LKUP
DYSFUNCTION_LKUP
EVIDENCE_DESTROYED_LKUP
EYE_GLASS_LKUP
FACIAL_HAIR_LKUP
FETISH_LKUP
HAIR_APPEARANCE_LKUP
INSERT_LOCATION_LKUP
ITEMS_OWNED_LKUP



<YY> Renovation Project – Use Case 8 – System Admin: Manage Reference Tables

Table name
ITEMS_TAKEN_LKUP
JEWELRY_TYPE_LKUP
LOCATION_LKUP
METHOD_OF_ENTRY_LKUP
ODOR_LKUP
PERVERSION_LKUP
POINT_OF_ENTRY_LKUP
RELATIONSHIP_LKUP
SEX_ASSAULT_TYPE_LKUP
SEXUAL_ITEM_LKUP
SPEECH_LKUP
SUBJ_VICT_COMM_LKUP
SURPRISE_FORCE_TYPE_LKUP
TOOLS_USED_LKUP
TRANSPORTATION_LKUP
UNUSUAL_ASSAULT_LKUP
VICTIM_LAST_ACT_LKUP
VICTIM_WAS_LKUP
WEAPONS_USED_LKUP

OTHERS LOOKUP TABLES FROM CURRENT <YY>

The following 39 tables appear current <YY>. The grid indicates the source of the table and the data group in which they will appear in <YY> Restoration (if identified). During the Design Phase, developers will determine the permissions required for their modification based upon the information provided through the remainder of this section.

Table name	Paul and Andy's notes on source (if blank, assumed to be <YY> only)	Data group / Bill's comments
ADDR_SOURCE_LKUP	Replicated and edited for Livescan	Related address
ADDR_TYPE_LKUP	Replicated and edited for Livescan	Related address
AGENCY_LKUP		See below
BLOOD_TYPE_LKUP		Personal descriptor
BUILD_LKUP		
CIRCUMCISED_LKUP		



<YY> Renovation Project – Use Case 8 – System Admin: Manage Reference Tables

Table name	Paul and Andy's notes on source (if blank, assumed to be <YY> only)	Data group / Bill's comments
CITY_COUNTY_LKUP	Updated from CJIS Source/Replicated and edited for Livescan (join with Zip_Code_Lkup)	
CORRECTIVE_VISION_LKUP		
COUNTY_CODE_LKUP	Replicated and edited for Livescan	
DIM_LKUP	Updated from CJIS Source	
EYE_LKUP		Personal descriptor
HAIR_COLOR_LKUP		Personal descriptor
HAIR_LENGTH_LKUP		
LEWIS_LKUP		
LICENSE_PLATE_LKUP	Replicated and edited for Livescan	Vehicles
LICENSE_STATE_LKUP	Updated from CJIS Source	Vehicles
MNE_AGENCY_LKUP	Updated from CJIS Source	
MNU_LKUP		Personal descriptor; is this the same as cjis_mnu_lkup Andy refers to?
OCCUPATION_LKUP	Contains CJIS/NCIC codes augmented by SOTP-specific codes/Replicated and edited for Livescan	Personal descriptor
OFFENSE_SOURCE_LKUP		Conviction
PENAL_CODE_LKUP	Replicated and edited for Livescan	Conviction; Andy lists this as penal_code_lkup_livescan
POB_LKUP	Updated from CJIS Source	Personal descriptor; data elements shows 2: POB_US and POB_International
RACE_LKUP	Contains CJIS and NCIC Race codes and descriptions	Personal descriptor
REGEVENT_LKUP		
REPORT_AGENCY_LKUP		
REPORT_NAME_LKUP		
SECRETOR_LKUP		
SEX_LKUP		Personal descriptor



<YY> Renovation Project – Use Case 8 – System Admin: Manage Reference Tables

Table name	Paul and Andy’s notes on source (if blank, assumed to be <YY> only)	Data group / Bill’s comments
SKIN_TYPE_LKUP		
SMT_DESCRIPTION_LKUP	Replicated and edited for Livescan	Personal descriptor
SMT_LKUP	Updated from CJIS Source	Personal descriptor
SPECIMEN_LKUP		
STATE_LKUP		
TEETH_ABNORMAL_LKUP		
VEHICLE_BODY_LKUP		Vehicles
VEHICLE_COLOR_LKUP	Updated from CJIS Source/Replicated and edited for Livescan	Vehicles; top color
VEHICLE_STYLE_LKUP	Replicated and edited for Livescan	Vehicles
VEHICLE_TYPE_LKUP	Updated from CJIS Source/Replicated and edited for Livescan	Vehicles
ZIP_CODE_LKUP	USPS Compliant/Replicated and edited for Livescan (join with City_County_Lkup)	Andy’s note below

OTHER LOOKUP TABLES TO BE IN RENOVATED <YY>

The following data fields do not appear to be listed above but are included in UC 05 Global data sheets with a data type given as LOV or dropdown list. During the Design Phase the values in the lookup tables for these fields will be evaluated for reference table maintenance issues:

Data field	Data group
Jurisdiction	Convictions
Offense type	Convictions
Age of Victim	Convictions
County of Recommitment hearing	<XX> only
Registration requirement	<XX> only
Phone number type	Related address
Make	Vehicle
Model	Vehicle
Megan’s Law Disclosure Status	Status
Registration Requirement	Status

This list will be updated when UC 05 data element review is completed.



<YY> Renovation Project – Use Case 8 – System Admin: Manage Reference Tables

REFERENCE TABLES TO BE UPDATABLE IN RENOVATED <YY>

The following tables, containing multiple fields, provide the values that appear in dropdown lists.

During the Design Phase the values in the lookup tables behind these fields will be evaluated for reference table maintenance issues.

Table name	Fields in table include	Notes:
agency_lkup	agency_id	<p>From Andy:</p> <p>ORI - Agency ORIs are currently maintained in <YY>'s agency_lkup table. There is some analysis performed before an entry is made in the table. An ORI has to be CAS compliant. The agency_id column has to be validated for the ORI before the entry is made.</p> <p>Extenuating circumstances: OIMS tables are modified based on the agency_lkup table. Depending on the nature of the requirement for a new ORI entry, OIMS may or may not come into play.</p> <p><YY>'s Pro*C CLETS transactions require that a "prime" (last 2 digits are zeros) ORI be present in agency_lkup before a non-prime ORI entry can be made (in which case really only the prime has to be entered, at least for Pro*C). Otherwise the Pro*C will error the ESA or USA transaction with an invalid ORI.</p> <p>A renovated <YY> may decide to maintain ORIs just for itself, in which case the OIMS dependency will have to be considered.</p>
	ori	
	name	
	phone	
	phone_ext	
	fax	
	street_number	
	street	
	city	
	state	
	zip	



<YY> Renovation Project – Use Case 8 – System Admin: Manage Reference Tables

Table name	Fields in table include	Notes:
penal_code_lkup	code	From Andy: Penal Code - <YY> maintains what it considers valid penal codes in the penal_code_lkup table. There is some analysis performed before an entry is made in the table. This table is also replicated for LiveScan's use as penal_code_lkup_livescan, with additional columns for corresponding CJIS codes which also have to be entered.
	description	
	category	
	ml_flag	
	public_internet_address	
	Registerable	
contacts_lkup	name	From Bill: When a listing in the contacts table is deactivated, <YY> determines whether that individual was listed as a contact on any sex registrants' records. If it is, a message appears and requests the user to specify a new contact to be associated with all users previously associated with the deactivated contact.
	phone	
	phone_ext	
	email	
	mnemonic	
Zip_code_lkup		From Andy: Zip Code - Though CFIS pulled the plug on our piggy-backing onto their process in November 2007 (giving the Renovation a perfect opportunity to create a new zip code mechanism from scratch) <YY>'s zip codes were derived from USPS data. The occasional SOTP request (at the insistence of some LEA) to modify the zip code lkup table could not be accomodated, due to the monthly refresh via the now-defunct process, and the need to maintain integrity.



<YY> Renovation Project – Use Case 8 – System Admin: Manage Reference Tables

Table name	Fields in table include	Notes:
		However, this kind of request has been dealt with by modifying the city_county_lkup table to associate the city in question with an additional county.

Additional notes from Andy to be considered during Design Phase:

- How will lkup table maintenance provide for CJIS and NCIC changes?
- There is no documentation from initial or subsequent <YY> development that details the source of lkup tables, or any scheme to maintain them if they were indeed derived from CJIS or NCIC sources (!) It can be assumed that most <YY> lkup tables have their origin with some CJIS hierarchical database, just like <YY>'s weighted name search routine is derived from the CJIS Wanted Persons System (WPS) weighted name search.
- Should lkup table maintenance allow for the insert of non-CJIS/NCIC values into a CJIS/NCIC-compliant table? Should maintenance allow any change that jeopardizes the integrity of the table? (Recently I noted in an e-mail that certain Livescan terminal vendors provide for the selection of "BAL" (bald) as a hair color. However, legacy <YY> only recognizes "XXX" for "unknown" or "bald". Thus, certain LiveScan transactions into <YY> are erroring. Should <YY>'s lkup table be modified to provide for BAL, or should the LiveScan terminal vendors limit the selectability of sex registrant hair colors to only the values in <YY>'s lkup table?)
- Consideration needs to be given to the effects of modifications to validation tables on (1) data tables in the database, and (2) <YY> interfaces. Data table rows may need to be modified depending on changes to the values in the lkup tables, and these changes may need to be reflected across interfaces.